

TEMES V1.0.35 or newer and USBSER

USBSER Driver Installation

The device driver for USBSER is available either on the CD-ROM in the folder `|Drivers|USBSER` or from the Internet via <http://tellert.de/?product=USBSER>. Best practice is to run the automatic FT232R device driver installer before the USBSER is plugged in for the first time.

Windows Device Manager

The Windows Device Manager is started as follows: Choose *System* from the *Control Panel*. Choose tab *Hardware* if it is available, then click on *Device Manager*. (A faster method is to right-click on the *Computer* icon and to choose menu item *Properties*. Further methods are to press the hotkey *Windows+Pause* or to run *devmgmt.msc*).

USBSER Port Settings

The advanced port settings can be modified as follows: Choose the corresponding port in the Windows Device Manager. Right-click on the port and choose menu item *Properties*. Select tab *Port Settings* and then press button *Advanced...*

Recommended Settings

All values of the advanced port settings should be set to their corresponding minimum values, and all check boxes should be unchecked.

Screenshots

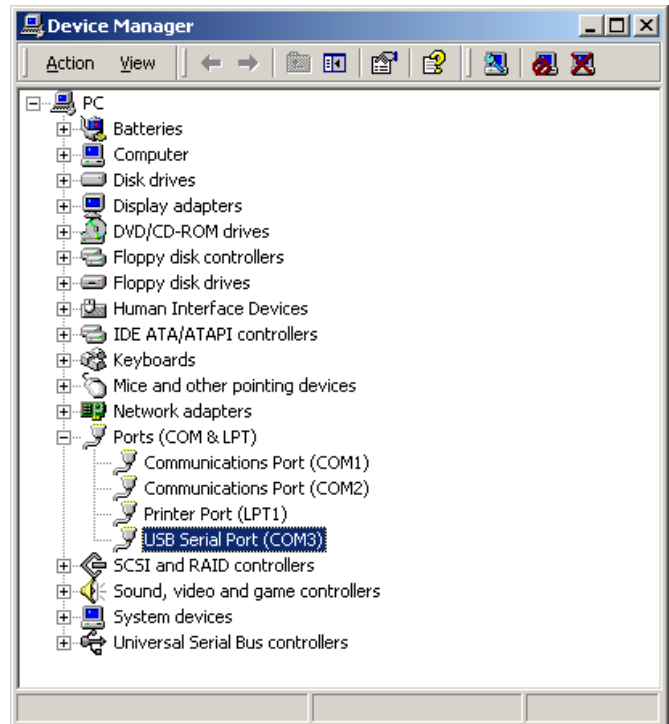


Figure 1: USBSER port in the Windows Device Manager.

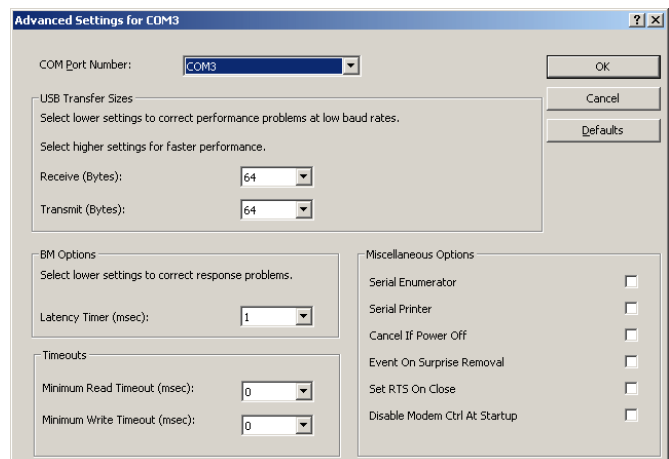


Figure 2: USBSER port settings.